



When Innovation Meets Cleaning

Webinar White Paper



When Innovation Meets Cleaning

Elevate your cleaning game.

AGITATION & WHY IS IT IMPORTANT?

Critical to maximising the chemical action.

Critical to match the surface texture to the agitation type;

- **Cloth:** Smooth surfaces, light soiling
- **Pad:** Smooth surfaces
- **Scrubbing Brush:** Rough, undulating surfaces
- **High-Pressure Water:** Outdoor textured surfaces, hard-to-scrub surfaces.



WHAT MAKES THE SYSTEM 7 PAD UNIQUE?

The System 7 Pad is a cutting-edge melamine floor cleaning pad designed for use with both hard floor machinery and for hand-held applications. Its innovation comes from its high-quality melamine resin foam, enhanced with proprietary additives and adhesives.



Reusable, washable & tear-resistant.
This combination provides exceptional tear resistance and durability, making the pad reusable and cost-effective.



Removes "impossible" soiling
Its remarkable soil-cutting power removes tenacious soiling on tiles which all other chemical & agitation systems leave behind.



10,000m² service life per pad.
Unlike traditional melamine pads that wear out quickly, the System 7 lasts up to 10,000 square meters of cleaning.



Amazing smoke & soot residue removal
The pad's innovative design allows it to handle severe cases of soot, often eliminating the need for repainting.

WHAT ARE THE MAIN APPLICATIONS?

Maintenance Cleans



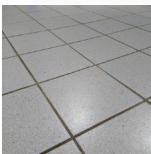
Deep Cleans



Fire Restoration



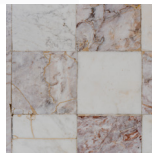
SURFACE SUITABILITY



Porcelain & Ceramic Tiles



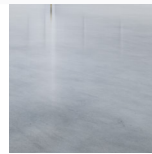
Terracotta & Quarry Tiles



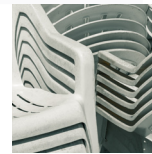
Natural Stone Surfaces



Terrazzo Surfaces



Polished Concrete



Plastic Surfaces



Painted Walls & Surfaces

HOW DOES THE SYSTEM 7 PAD SIMPLIFY TOUGH CLEANING TASKS?



Deep Cleans/Tile Restoration

The System 7 Pad's amazing ability to remove impossible soiling from hard surfaces without abrasive agitation is game changing:

- Removes super-stubborn soiling and discolouration.
- Restores slip resistance to hard floors
- Compatible with all cleaning equipment types
- Compatible with acid & alkaline detergents
- Excellent durability and service life.



Maintenance Cleans

The System 7 Pad's cutting-edge design cleans the floor far better than traditional maintenance cleaning equipment, thus resulting in the following:

- Floor coverings are largely kept in new condition.
- Deep cleans are no longer required as frequent.
- Floors are cleaned better and quicker.
- The quick drying times allow for immediate use of cleaned areas.



Detergent Residue

Alkaline detergent residue is a common issue on ceramic and porcelain flooring. It results in a stubborn discolouration which can be tough to rectify. The System 7 pad quickly breaks through and removes years of build-up.

- Efficiently restores floor tile appearance.
- Restores slip resistance.
- Surface safe.
- Avoids use of harsh chemistry and/or techniques.



Soot & Smoke Residue Removal

The System 7 Pad's effectively removes soot & fire deposits effectively and quickly, thus resulting in the following:

- Reduced waste and lower long-term costs due to its high tear resistance and durability ensure a long-service life.
- Often eliminates the need for repainting, due to its deep-pore cleaning action and superior dirt-pulling capability.
- Suitable for use on a wide range of construction materials.

KEY TECHNIQUES FOR MASTERING THE SYSTEM 7 PAD



Always use the pad wet

The System 7 Pad is not made to be used dry; it must be wet when used.



Clean with the grey-speckled side of the pad

The white side is designed to grip onto the pad drive or holder.



Combined with the correct chemicals

Using the correct chemicals will enhance the pads effectiveness on the job.

POWERFUL COMBINATIONS



Tile & Grout Cleaner LF + System 7

Best combination for deep cleans, detergent residue removal and maintenance cleans.



Tile & Grout Restore + System 7

Ideal combination for removing tough detergent residue and pool surround cleans.



Fire Restore + System 7

Unbeatable soot and smoke residue removal for fire and tobacco restoration clean ups.

SYSTEM 7 PAD SIZES

Disc Pad

- iMop
- 300mm
- 356mm
- 400mm
- 430mm
- 525mm
- 530mm

Eccentric Pad

- 350x500mm

Hand Pad

- 115x250mm
- 115x62mm

FURTHER RESOURCES

- Knowledge Centre
- System 7 Pad - Restoration PDS
- System 7 Pad - Hard Floor PDS
- T&G Cleaner LF PDS
- T&G Cleaner Restore PDS
- Fire Restore PDS



 11 Gamma Close Beresfield NSW 2322
 02 4966 5516
 info@actichem.com.au
www.actichem.com.au

